

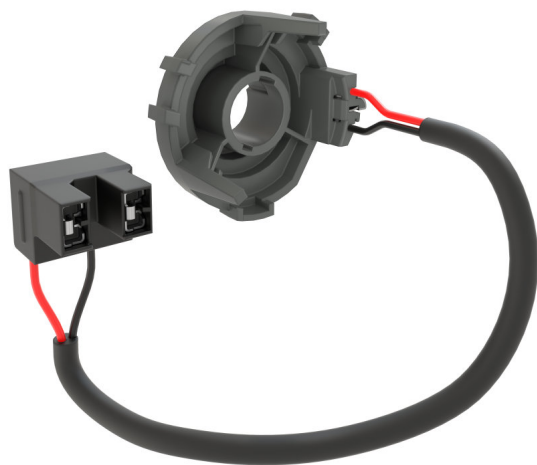
LEDDriving ADAPTER (OFFROAD) 64210DA08

Accessories for LED retrofit lamps



Making LED upgrades fit right in

The mounting brackets offer an easy installation and compatibility for a variety of cars. Guarantees a perfect fit due to optimal fastening of the H7 lamp.



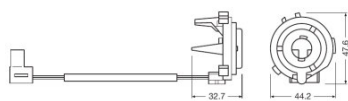
Product datasheet

Technical data

Product information

Order reference	64210DA08
Application (Category and Product specific)	Accessories for LED retrofits

Dimensions & weight



Diameter	33.9 mm
Product weight	15.00 g
Length	41.9 mm

Lifespan

Guarantee	3 years
-----------	---------

Capabilities

Technology	LED accessories
------------	-----------------

Country specific categorizations

Order reference	64210DA08
-----------------	-----------

Environmental information

Information according Art. 33 of EU Regulation (EC) 1907/2006 (REACH)	
Date of Declaration	07-03-2024
Primary Article Identifier	4062172242745
Candidate List Substance 1	Lead
CAS No. of substance 1	7439-92-1
Safe Use Instruction	The identification of the Candidate List substance is sufficient to allow safe use of the article.

Product datasheet


Declaration No. in SCIP database	e8e08ec4-b41c-4e63-a1f9-5cc1e60cc950
----------------------------------	--------------------------------------

Logistical Data

Product code	Product description	Packaging unit (Pieces/Unit)	Dimensions (length x width x height)	Volume	Gross weight
4062172242745	LEDriving Adapter 64210DA08	Folding carton box 2	100 mm x 80 mm x 60 mm	0.48 dm ³	53.00 g
4062172242752	LEDriving Adapter 64210DA08	Shipping carton box 20	415 mm x 109 mm x 134 mm	6.06 dm ³	658.00 g
4062172242769	LEDriving Adapter 64210DA08	Shipping carton box 120	435 mm x 348 mm x 300 mm	45.41 dm ³	4727.00 g

The mentioned product code describes the smallest quantity unit which can be ordered. One shipping unit can contain one or more single products. When placing an order, for the quantity please enter single or multiples of a shipping unit.

Download Data

File	
	User instruction LEDriving ADAPTER

Application advice

For more detailed application information and graphics please see product datasheet.

Disclaimer

Subject to change without notice. Errors and omission excepted. Always make sure to use the most recent release.

